



Client administration

ELO WebDAV



Table of contents

WebDAV	3
ELO WebDAV server address	3
Using ELO WebDAV on Windows	5
Using WebDAV on Linux	14
Using WebDAV on MAC OS X	16
Using WebDAV on Android	18
Using WebDAV on iOS	19
Overview: WebDAV clients	20
ELO WebDAV for SAP® ILM	22

WebDAV

ELO WebDAV server address

Information

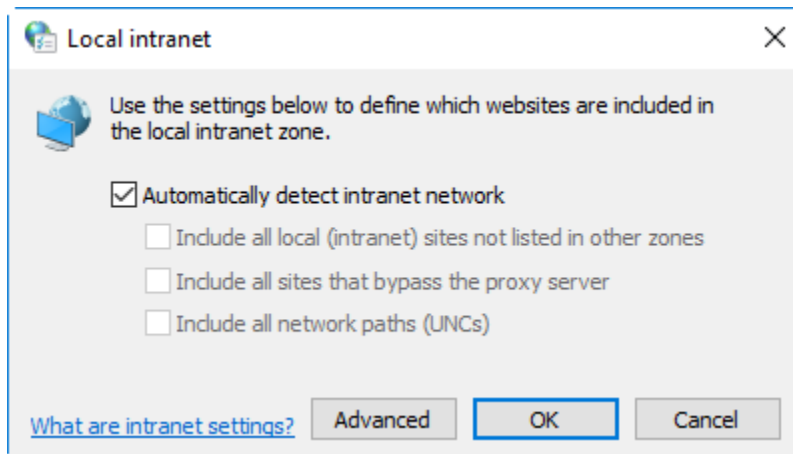
ELO WebDAV is already integrated into the ELO Indexserver. You can access the ELO WebDAV directory from the browser. To do this, enter the ELO WebDAV address according to the following convention:

```
http://<server name>:<port>/ix-<repository name>/ixwebdav
```

Connecting using a fully qualified domain name

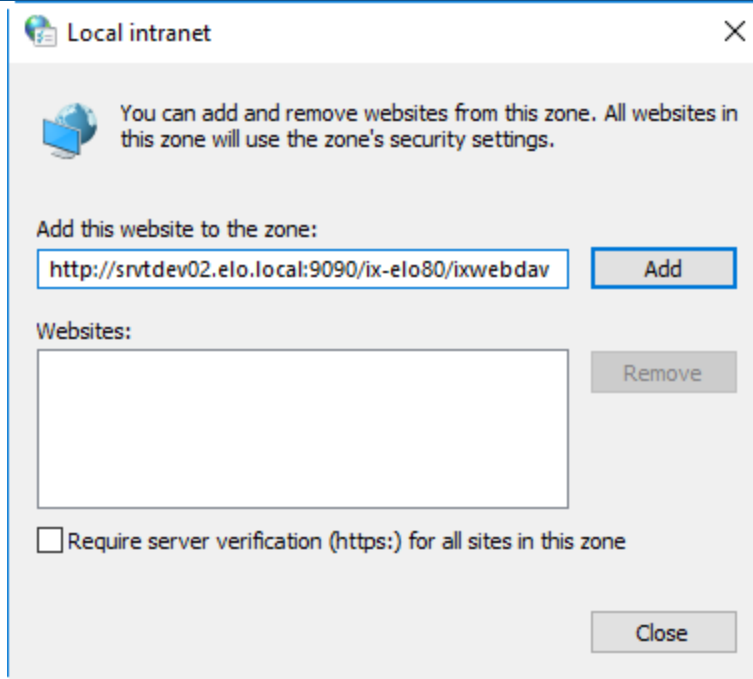
If you want to connect to a WebDAV server using a fully qualified domain name (FQDN), you must add the server to the corresponding *Local intranet* zone:

1. Open the *Internet Options* in the Control Panel.
2. Navigate to the *Security* tab.
3. Select the *Sites* button.



The *Local intranet* dialog box opens.

4. Make sure that the *Automatically detect intranet network* setting is enabled.
5. Select *Advanced*.



An additional *Local intranet* dialog box opens.

6. Enter the server's fully qualified URL.

The following examples make the difference between a normal URL and a fully qualified URL clearer:

- Normal URL: `http://srvtdev02:9090/ix-elo80/ixwebdav`
- Fully qualified URL: `http://srvtdev02.elo.local:9090/ix-elo80/ixwebdav`

7. Select *Add*.
8. Close the dialog box.
9. Close the other dialog boxes with *OK*.

Using ELO WebDAV on Windows

Windows uses NTLM authentication. This means that passwords are only transferred to the server in encrypted form.

General note on using ELO WebDAV in Windows

This section contains notes on using ELO WebDAV in Windows.

WebDAV Redirector

In Windows Server 2016 and higher, you must install the *WebDAV Redirector* component server side.

You can find more information below under Using WebDAV Redirector.

WebClient

The Windows service *WebClient* must be running on the client computers. Ideally, the service should be set to start automatically.

1. You can set the startup type with the following PowerShell command:

```
Set-Service WebClient -StartupType Automatic
```

2. You can start the service with the following PowerShell command:

```
Start-Service WebClient
```

Data transfer rate

With the default settings, a maximum of 47 MB can be transferred using WebDAV.

1. To enable a greater transmission rate, adjust the `FileSizeLimitInBytes` key in the registry.

You can find the key under:

```
HKEY_LOCAL_MACHINE\SYSTEM\CurrentControlSet\Services\WebClient\Parameters
```

Here you can enter values up to 4 GB (4294967295 bytes).

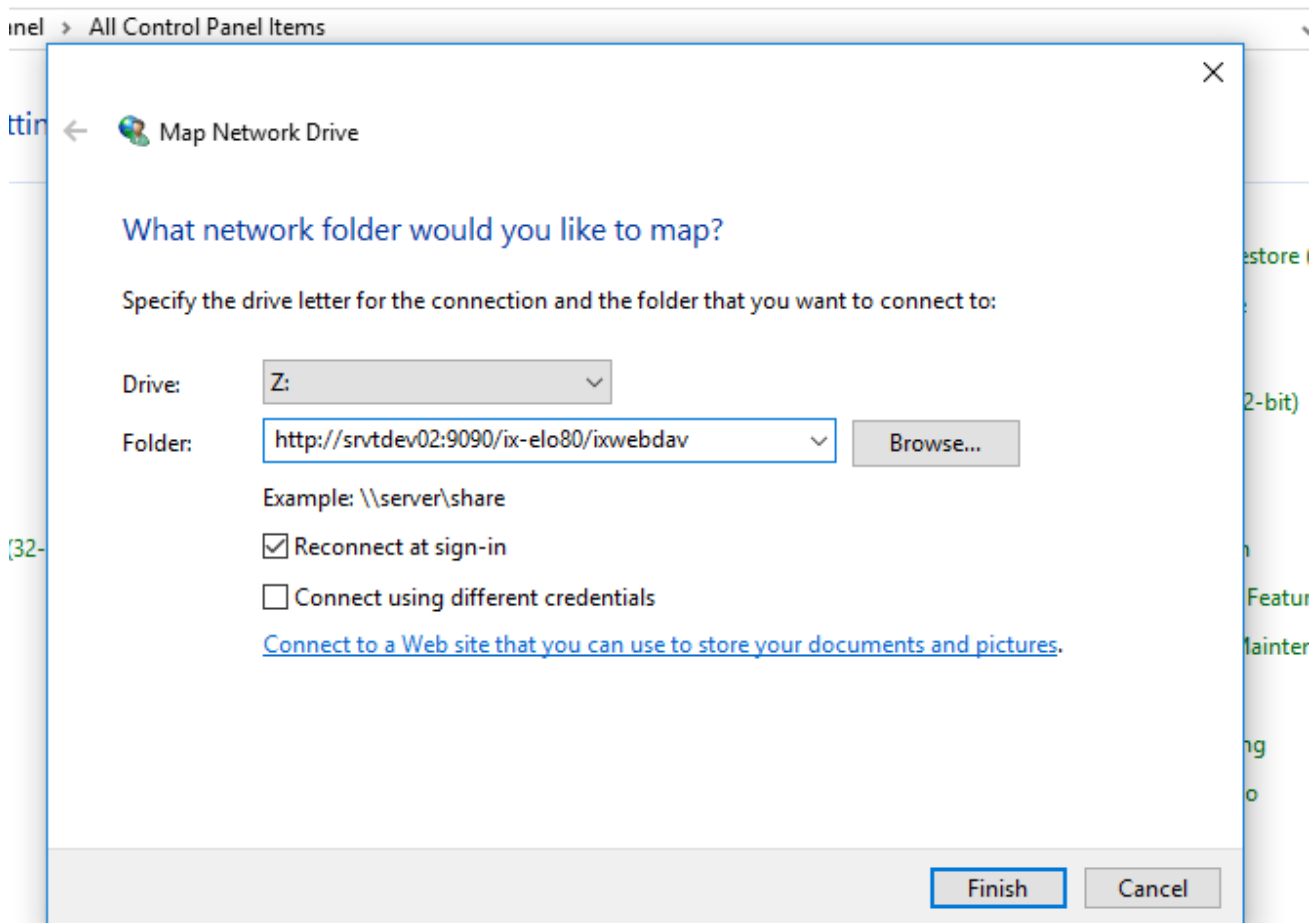
2. Next, restart the ELO Web Client service for the changes to take effect.

Path length

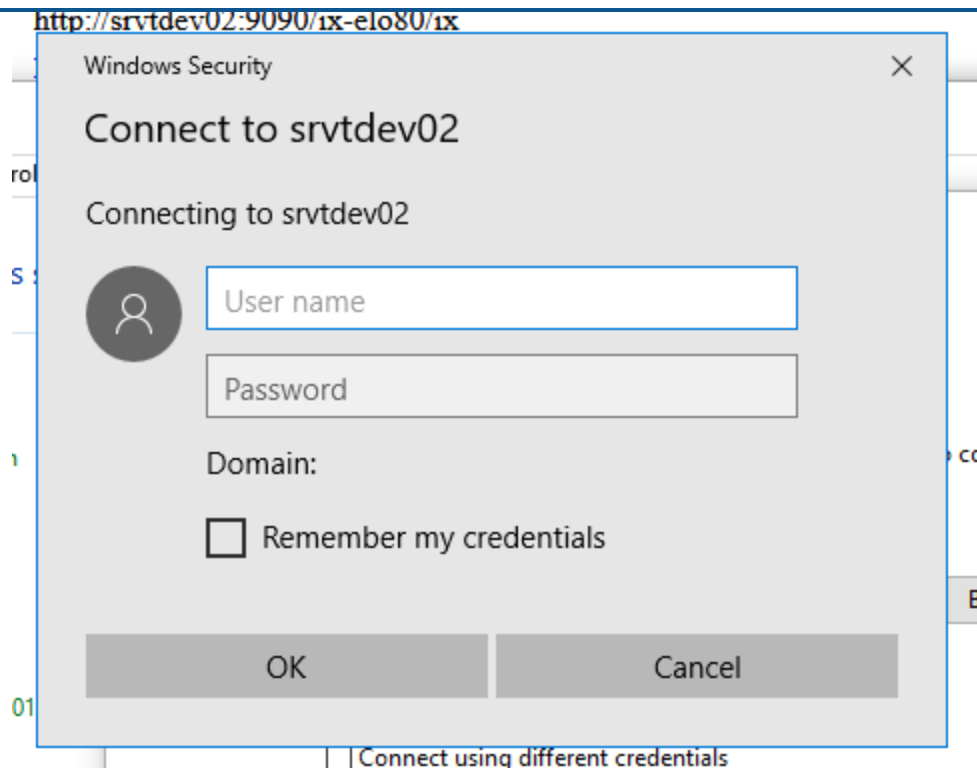
The maximum path length in Windows is 260 characters.

Connecting Windows Explorer as a network drive (Windows Vista and newer)

1. To connect ELO WebDAV as a network drive in Windows (Vista or higher), first open Windows Explorer.
2. Open the context menu for *Computer* or *Network*.
3. Select *Map network drive* from the context menu.



1. Select a free drive letter and enter the address of your ELO WebDAV under *Folder*.
2. Select *Finish*.



If the user logged into Windows is in Active Directory and exists as a user in ELO, NTLM authentication is applied automatically and no logon information needs to be entered. Otherwise, the Windows Security dialog box asks for your user name and password.

3. Authenticate using your ELO user data.

Please note

In this case, the basic authentication procedure is used, and the password is sent to the server in plain text. You can secure the data transfer using SSL.

In the registry, change the value of the `BasicAuthLevel` key to "2" (decimal) accordingly. You can find the key under:

```
HKEY_LOCAL_MACHINE\SYSTEM\CurrentControlSet\Services\WebClient\Parameters
```

Please note

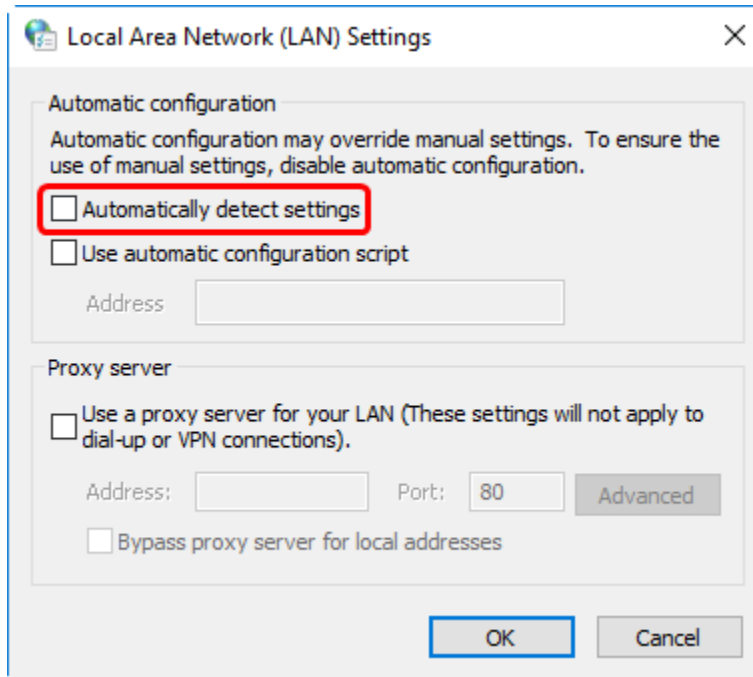
Copying documents clears the metadata.

This is because the Explorer sends the PUT command with the target path and content to ELOix, making it impossible to determine the SORD of the content since there is no SORD ID.

Slow connection to the WebDAV drive

If the connection to the WebDAV drive and Windows Vista is slow, check the following:

1. Open the *Internet Options* in the Control Panel.
2. Navigate to the *Connections* tab.
3. Select *LAN settings*.



The Local Area Network (LAN) Settings dialog box opens.

4. Clear the *Automatically detect settings* option.
5. Click *OK* to confirm.
6. Click *OK* to close the *Internet Options*.

In Windows XP

1. Open *My Computer* and select *Tools > Map network drive*.
2. Select the preferred drive letter.
3. Select the link to *Sign up for online storage or connect to a network server*.

The Windows dialog box to add network resources opens.

4. Select *Next*.
5. Select *Choose a different network resource*.
- 6.

Select *Next*.

7. Enter the ELO WebDAV address.

8. Select *Next*.

9. Enter a name for the network address.

10. Select *Finish*.

Using WebDAV Redirector

Windows Server 2016 and higher

In Windows Server 2016 and higher, you must install the *WebDAV Redirector* component server side.

Install as follows:

1. Use the following PowerShell command:

```
Install-WindowsFeature WebDAV-Redirector -Restart
```

2. Check the status of the installation with the following PowerShell command:

```
Get-WindowsFeature WebDAV-Redirector | Format-Table -AutoSize
```

```
Display Name      Name              Install State
-----
[X] WebDAV Redirector WebDAV-Redirector Installed
```

If WebDAV Redirector was successfully installed, the value `Installed` is output in the table.

WebDAV Redirector for versions older than Windows Server 2016

The following link provides information on using WebDAV via WebDAV Redirector (in Windows 7, Windows 8, Windows Server 2008, or Windows Server 2012):

<https://learn.microsoft.com/en-us/iis/publish/using-webdav/using-the-webdav-redirector>

Information

- Desktop Experience must be installed starting with version 2008.
- If you get the error message "System error 67 has occurred. The network name cannot be found" when adding the ELO WebDAV as a network drive, please check whether the Windows *WebClient* service is running and whether Desktop Experience is installed.

With the command line

To map ELO WebDAV to a network drive, use the following command in the Windows command line:

```
net use Z: \\<host name>:<port>/ix-<repository name>/ixwebdav/persistent:yes
```

Use the /persistent parameter to define whether the network drive should remain available after a restart. If you set the value no here, the connection will not be reestablished.

With NetDrive

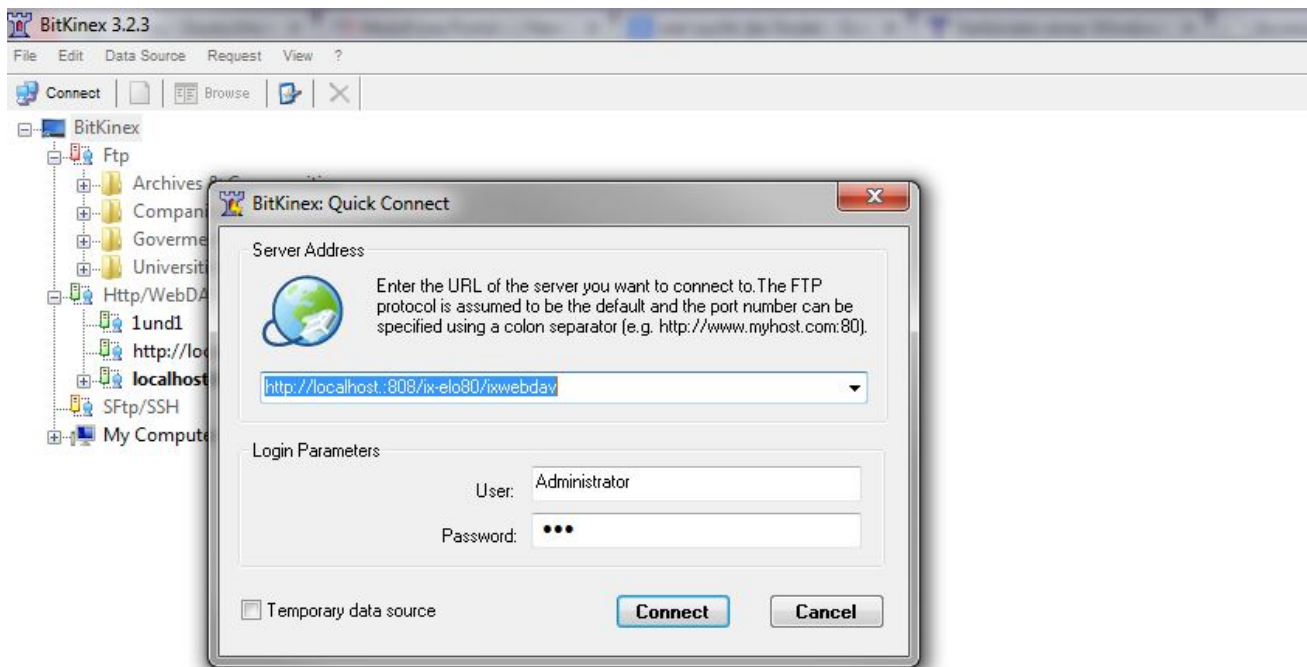


1. Select *New Site* and enter a name for the connection.
2. Enter the ELO WebDAV address under *Site IP or URL*.
3. Open the drop-down menu for *Server Type* and select the entry *WebDav*.
4. Enter the server port into the *Port* field.
5. Select the drive letter you want to use.
6. Enter your ELO logon credentials under *Account* and *Password*.
- 7.

To enable SSL encryption, select *Advanced* and select *Use HTTPS*.

8. To use SSL encryption, change the port from 8080 to 443.
9. Select *Save* to save the connection.
10. Select *Connect* to establish the connection.

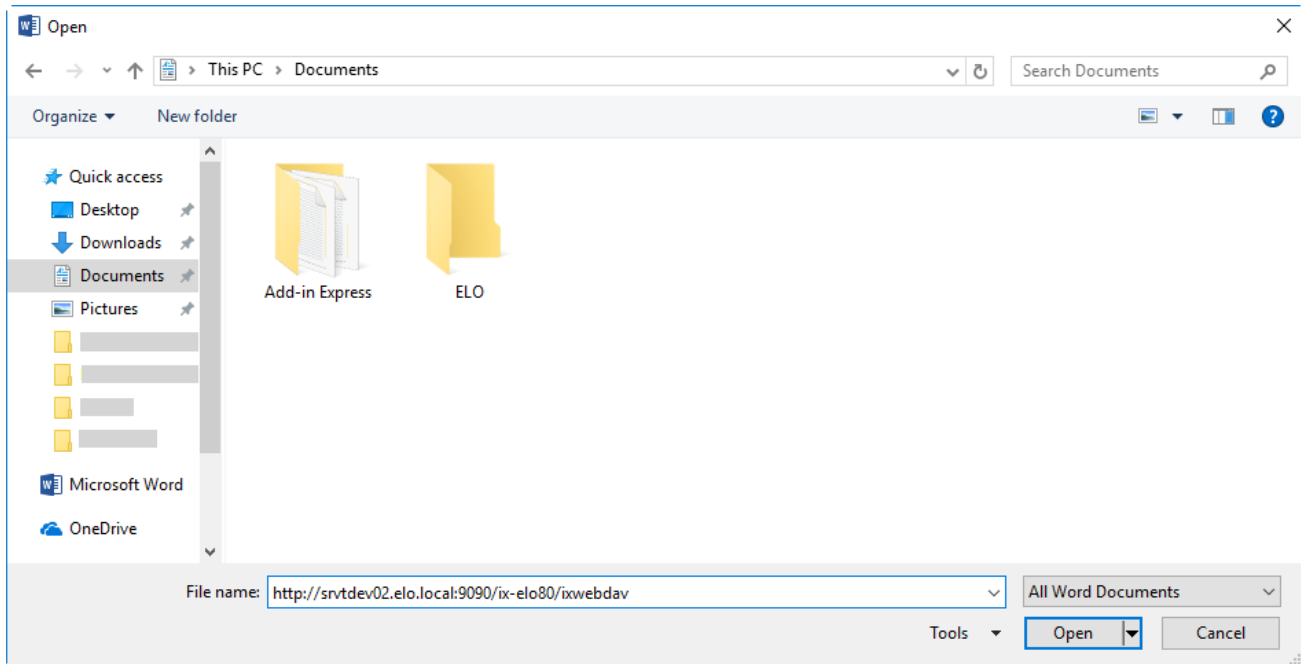
With BitKinex



Unlike Windows Explorer and NetDrive, BitKinex does not support WebDAV connections as network drives. Instead, it uses its own interface. However, BitKinex does support a wide range of features including the ability to lock folders and files and move and copy files on the server without having to download the files first.

1. To connect BitKinex to ELO WebDAV, select *Connect* or *Quick Connect* under the *File* menu option.
2. Enter the ELO WebDAV Internet address and the ELO user data.
3. Select *Connect*.

Using WebDAV with Microsoft Office applications



Microsoft Office uses its own WebDAV client. This means you can open an ELO repository in Office applications like Microsoft Word, Microsoft Excel, and Microsoft PowerPoint without connecting ELO WebDAV to a network drive first.

1. In the *Open* dialog box, enter the Internet address as a file name.
2. Confirm your input with the ENTER key.

Please note

Do not select *OK*.

General note on using ELO WebDAV with Microsoft Office applications

With the default settings, some Microsoft Office programs only open documents from a hyperlink in read-only mode. In the registry, change the value of the `OpenDocumentsReadWriteWhileBrowsing` key to "1" (DWORD) accordingly.

You can find the key under:

```
HKEY_CURRENT_USER\Software\Microsoft\Office\<version>\Common\Internet
```

The following website provides instructions: http://www.webdavsystem.com/server/documentation/ms_office_read_only.

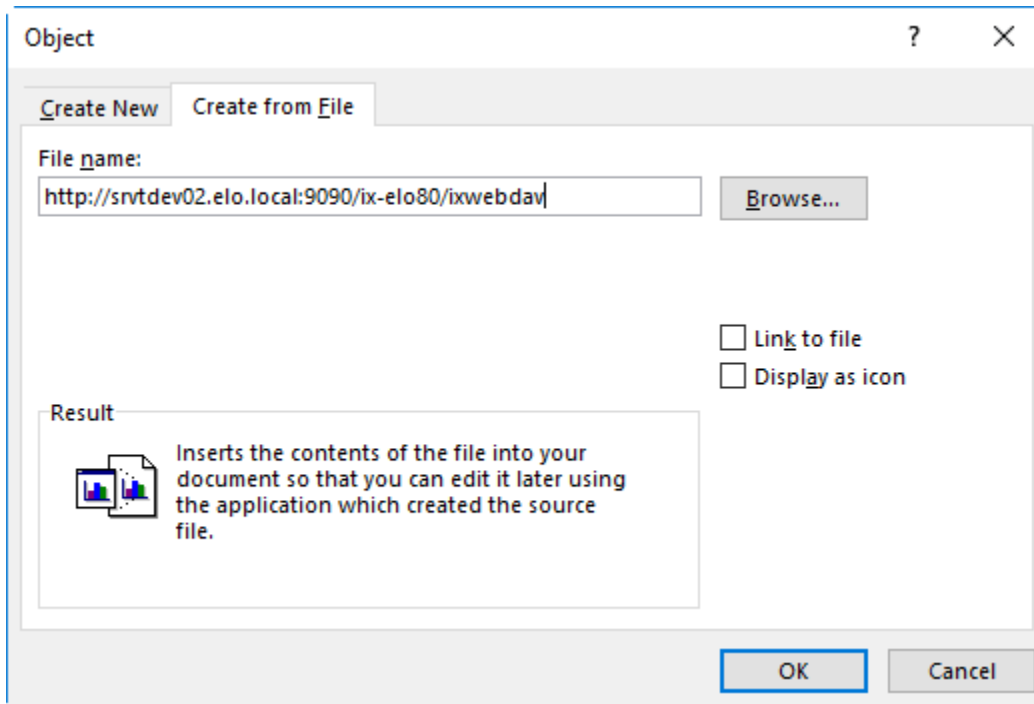
If a logon dialog box is shown every time you open Office documents, the following settings have to be changed.

- Enable the option *Automatic logon with current user name and password* (found under: *Internet Options > Security > Local Intranet > Custom Level > User authentication > Logon*)
- The ELOix server must be in the intranet zone. This requires two entries:
 - One with FQN: (e.g.: `http://srvtdev.elo.local`)
 - One without FQN: (e.g.: `http://srvtdev.elo.local`)
- In the Windows registry, create the entry (REG_MULTI_SZ) with the name *AuthForwardServerList* under:

```
HKEY_LOCAL_MACHINE\SYSTEM\CurrentControlSet\Services\WebClient\Parameters
```

- As the value, use the host name of the IX server.
- This requires two entries:
 - One with FQN: (e.g.: `http://srvtdev.elo.local`)
 - One without FQN: (e.g.: `http://srvtdev.elo.local`)

Embedding objects from ELO in Microsoft Office applications



ELO WebDAV also allows you to embed files stored in ELO as objects.

Using WebDAV on Linux

NTLM authentication is not used on Linux. Instead, Linux uses basic authentication. For this reason, we recommend that you secure the data transfer through SSL.

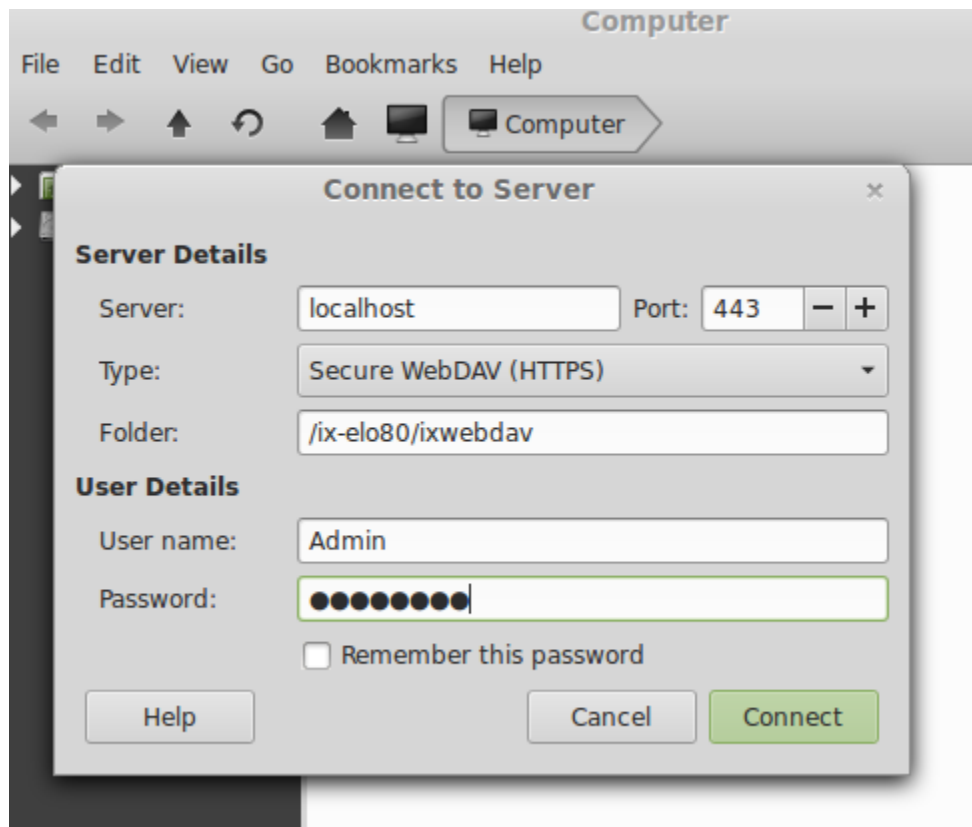
Davfs2 (command line)

1. Use the following command:

```
sudo mount.davfs -o userid=<LINUX-USER> http://<server name>:<port>/ix-<repository name>/i
```

2. Replace the placeholders with your own values.

Gnome/Nautilus



1. In Nautilus, select *Locations > Connect to server*, or select *File > Connect with a server*.
2. Enter the following settings:

Field	Notes
Server	The server name
Port	The port used; default for HTTPS 443

Field	Notes
Folder	The path to the respective WebDAV directory
User name	Name of the ELO account used
Password	Password of the ELO account used

KDE/Dolphin

Open the ELO WebDAV address with Dolphin or Konqueror.

Using WebDAV on MAC OS X

NTLM authentication is not used on Mac OS X. Instead, Linux uses basic authentication. For this reason, we recommend that you secure the data transfer through SSL.

Command line

1. Use the following command:

```
mount -t webdav http://<server name>:<port>/ix-<repository name>/ixwebdav/<mount point >
```

2. Replace the placeholders with your own values.

Finder

1. In the Finder, select *Go to > Connect to server*.
2. Enter the Internet address of ELO WebDAV into *Server address*.
3. Select *Connect*.

Information

While working with the Finder, many temporary files will be generated, uploaded to ELO, and deleted again afterwards. Additionally, the files are also created in the ELO root folder. For this reason, the user who is logged on must have write permissions to the root folder.

Cyberduck

Unlike the Finder, the free Cyberduck tool does not generate temporary files.

1. After installing Cyberduck, start Cyberduck from your dock or program folder.
2. Select *New connection*.

Open Connection ✕

WebDAV (Web-based Distributed Authoring and Versioning) ▾

Server: Port:

URL: <http://Administrator@localhost:9090/ix-elo90/ix...> ⚠

Username:

Password:

Anonymous Login

SSH Private Key:

Save Password

⬆ More Options

Path:

Connect Mode: ▾

Encoding: ▾

1. Enter the following settings:

Field/option	Notes
Server	The server name
Port	The port used
User name	Name of the ELO account used
Password	Password of the ELO account used
Save password	Enabled
Path	The path to the respective WebDAV directory

Using WebDAV on Android

WebDAV File Manager

1. To connect to ELO WebDAV, you first need to configure a new server (*Add Server* menu item).

- Name: Name of the connection (such as "ELO")
- URL: Internet address of ELO WebDAV

Please note

A port number cannot be entered here.

- User Name: ELO user name
- Password: Password for the ELO account

2. Select the *Optionally specify a port number* setting and enter the port.

3. Select *Registration*.

WebDAV Nav Lite

1. Select the plus icon to add a new WebDAV server.

2. Enter the following values:

- Name: Name of the connection (such as "ELO")
- Server URL: Internet address of ELO WebDAV
- User name: ELO user name
- Password: Password for the ELO account

Using WebDAV on iOS

WebDAV Navigator

1. Select the plus icon to add a new WebDAV server.
2. Enter the following values:
 - Name: Name of the connection (such as "ELO")
 - Server address: Internet address of ELO WebDAV
 - User name: ELO user name
 - Password: Password for the ELO account

Over-the-air

1. Select *Add Server*.
2. Enter the following values:
 - Display name: Name of the connection (such as "ELO")
 - URL: Internet address of ELO WebDAV
 - User ID: ELO user name
 - Password: Password for the ELO account

Overview: WebDAV clients

ELO WebDAV has been tested with the following WebDAV clients:

Client	Operating systems	Connected as drive	LOCK	PROPPATCH	MOVE/ COPY	Free	Comments
Windows Explorer	Windows	Yes	No	No		N/A	
BitKinex	Windows	No	Yes	No	Yes	Yes	
WebDrive	Windows, Mac	Yes	Yes	No	No	No	Generates temp files
NetDrive	Windows	Yes	No	No	No	Yes, for non-commercial use	
Cyberduck	Windows, Mac	No	No	Yes	No	Yes	
Cross FTP Pro	Windows, Mac, Linux	No	Yes	No	Yes	No	
CarotDAV	Windows	No		Yes	Yes	Yes	
TotalCommander WebDAV plug-in	Windows, Android	No	No	No		Free for Android	
Transmit	Mac	Drive and own UI	No	No	Yes	No	Generates temp files Saves temp files in root folder and current folder
Finder	Mac	Yes	No	No	No	N/A	Command line
Cadaver	Linux	No	Yes	Yes	Yes	Yes	
Dolphin	Linux	No	No	No	Yes	Yes	
Nautilus	Linux	No	No	No	No	Yes	
davfs2	Linux	Yes	No	No	No	Yes	Generates temp files
Microsoft Office	Windows, Mac	No	No	No	No	No	
WebDAV File Manager	Android	No	No	No	Yes	Yes	
WebDAV Nav Lite	Android	No	No	No	Yes	Yes	
FolderSync Lite	Android	No	No	No	Yes	Yes	

Client	Operating systems	Connected as drive	LOCK	PROPPATCH	MOVE/ COPY	Free	Comments
WebDAV Navigator	iOS	No	No	No	Yes	Yes	
OverTheAir	iOS	No	No	No		Yes	Not for editing. Only to read and upload files.

ELO WebDAV for SAP® ILM

ELO WebDAV 3.1 for SAP® ILM is an add-on integrated in the ELO Indexserver that enables you to use the ELO Indexserver as the storage location in SAP Information Lifecycle Management scenarios (ILM).

Please note

The *WebDAV ILM* metadata form is automatically created to store SAP properties, but only if the request originates in SAP.

For more information, see:

[ELO Suite for SAP ArchiveLink® \(SAP NetWeaver® & SAP S/4HANA®\) > ELO WebDAV for SAP® ILM](#)